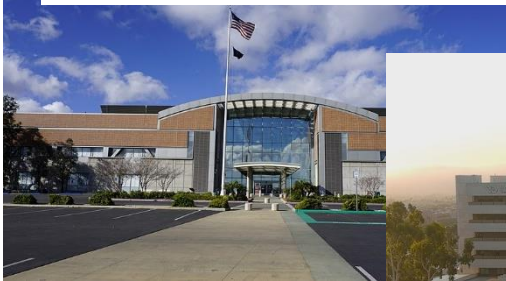


VA



U.S. Department of Veterans Affairs

VA Greater Los Angeles Healthcare System



VA GREATER LOS ANGELES HEALTHCARE SYSTEM

PGY2 Ambulatory Care Pharmacy Residency

ASHP Accredited 2016

PGY2 Neurology Pharmacy Residency

ASHP Accredited 2014



(updated August 2023)

The Training Sites

The **VA Greater Los Angeles Healthcare System (VAGLAHS)** is one of the largest health care facilities within the Department of Veterans Affairs. It is one component of the [VA Desert Pacific Healthcare Network \(VISN22\)](#) offering services to Veterans residing in Southern California and Southern Nevada. VAGLAHS consists of two ambulatory care centers, a tertiary care facility and 8 community-based outpatient clinics. VAGLAHS serves Veterans residing throughout five counties: Los Angeles, Ventura, Kern, Santa Barbara, and San Luis Obispo. There are 1.4 million Veterans in the VAGLAHS service area. The VAGLAHS directs the Department of Veterans Affairs' largest educational enterprise.

We serve as a major training site for medical residencies sponsored by the [UCLA David Geffen School of Medicine](#) and [USC School of Medicine](#), as well as more than 45 colleges, universities and vocational schools in 17 different medical, nursing, paramedical and administrative programs. Over 500 University residents, interns, and students are trained at the VA Greater Los Angeles Healthcare System each year. The institution sponsors 16 medical residencies and numerous associated health residencies and internships in dentistry, podiatry, optometry, pharmacy, clinical psychology, social work and dietetics.

VAGLAHS prides itself in its diversity, equity and inclusion where the strategic objective is to recruit, hire, train, develop, and retain a diverse workforce to allow all individuals to realize their full potential and to meet current and future needs and challenges for Veterans and their families.



*The **West Los Angeles (WLA) Medical Center** is a tertiary care teaching facility dedicated to providing a wide array of acute and ambulatory patient care services to our nation's veterans. The comprehensive diagnostic and treatment services provided include a broad range of medical, surgical, and psychiatric care. Internal medicine subspecialties include cardiology, infectious diseases, gastroenterology, allergy, pulmonology, nephrology, endocrinology, rheumatology, and hematology/oncology. Major surgical subspecialties include orthopedics, urology, neurosurgery, ophthalmology, plastics, ENT, podiatry, and cardiothoracic surgery. In addition to the main acute care hospital, there is a 180-bed nursing home, a hospice unit, and Home-Based Primary Care.*

The ***Sepulveda Ambulatory Care Center (SACC; SEP)*** offers a state-of-the-art ambulatory care facility. The center has specialty outpatient programs in spinal cord injury, stroke rehabilitation, women's health, preventative medicine, dentistry, and mental health, and chemical dependency. Extended care activities include a 120-bed Academic Nursing Home and a Home-Based Primary Care Program.





The **Los Angeles Ambulatory Care Center (LAACC; LAO)** is located in the heart of Downtown Los Angeles. It serves as a centrally located facility for the diverse veteran population of the city of Los Angeles, focusing on primary care and mental health services. The clinic provides special services in post-traumatic stress disorder, day treatment, medical service, and mental health services.

General Program Information

The VAGLAHS offers PGY2 specialty residency programs in the area of Neurology and Ambulatory Care. The PGY2 programs allow for Early Commitment to our current PGY1 residents. Our PGY2 Neurology Program also offers National Early Commitment to all PGY1 VA pharmacy residents.

VAGLAHS has established academic affiliations with local schools of pharmacy including USC, UCSF, UCSD, UOP, Western University, and Loma Linda University. Residents have ongoing teaching responsibilities to pharmacy students and other trainees, as well as hospital staff. VAGLAHS is affiliated with the USC School of Pharmacy and offers residents the option of a teaching certificate and appointment as Adjunct Clinical Instructor of Pharmacy Practice at the USC School of Pharmacy.

The **PGY2 Neurology Pharmacy Residency** conducted by VA Greater Los Angeles Healthcare System (VAGALHS) in Los Angeles, California is accredited by

ASHP. It is the first ASHP accredited PGY2 Neurology Pharmacy Residency Program. Currently, it is one of only two neurology specialty residencies for pharmacists in the nation. Neurology is a growing area of specialty for pharmacists, especially within the VA. It is a twelve-month long program that provides a very diverse experience in both the acute care and ambulatory care settings. Training is primarily conducted at WLA.

The **PGY2 Ambulatory Care Pharmacy Residency** conducted by VA Greater Los Angeles Healthcare System (VAGALHS) in Los Angeles, California is accredited by ASHP. This program is conducted within a previously designated Center of Excellence in Primary Care Education (CoE PCE) in WLA's Homeless Patient Aligned Care Team (HPACT) and is focused on providing interprofessional care to the underserved as well as Primary Care (PACT).



PGY2 Neurology Pharmacy Residency

General Information

This specialty residency provides a comprehensive experience in contemporary neurology pharmacy practice, particularly in the areas of stroke, epilepsy, headache, and neurosurgery. Clinical experiences in movement disorders, dementia/neurobehavior, general neurologic disorders, and neurosurgery are offered as well. The resident will practice clinical pharmacy in an acute setting, as well as in an ambulatory setting primarily at the West Los Angeles (WLA) Medical Center location. An elective in psychiatry rotation at USC is available for residents interested in the experience. Neurology preceptors include skilled physician providers, neurology pharmacists, and research faculty members with extensive experience in this specialty, as well as in research and academia.

Residents will be involved in teaching, with possible appointment as Adjunct Clinical Instructor of Pharmacy Practice at the USC School of Pharmacy. Teaching opportunities include didactic and small group facilitations, as well as precepting pharmacy students and PGY1 pharmacy practice residents.

Clinical and laboratory-based research opportunities are available. Residents are required to complete a neurology-oriented research project suitable for presentation and publication. Residents will be required to attempt the BCPS certification by the end of their PGY2 residency year.

Practice Experience

Inpatient Experiences

- **Acute Care Neurology:** The resident will be responsible for reviewing and monitoring drug therapy regimen, which includes completing antimicrobial, heparin, and anti-seizure medication pharmacokinetic dosing consults. Residents will serve as the drug therapy specialist, as well as a pharmacy educator on the team.
 - **Inpatient Neurology Service:** In addition to the above, residents will provide thorough education to patients on management of risk factors for secondary stroke prevention. They will actively participate in interdisciplinary team meetings and medical rounds. The medical team consists of Board-Certified Neurologist attendings, UCLA Neurology fellows, UCLA Neurology residents, UCLA Psychiatry and Internal Medicine interns, and a clinical pharmacist.
 - **Epilepsy Monitoring Unit:** This is a specialized unit that was developed as part of the Epilepsy Center of Excellence (ECoE), designed to diagnose epilepsy, determine seizure localization, and identify subsequent surgical candidates. The resident will work closely with an Epilepsy fellow and be responsible for obtaining a detailed admission history and medication history in preparation for long term video EEG monitoring. Residents will actively participate in assessing/planning safe drug titration on and off anti-seizure medications and devising safe and effective medication regimen.
 - **Acute Care Neurosurgery:** The resident will be responsible for reviewing and monitoring drug therapy regimen, which includes antimicrobial and anti-seizure medication pharmacokinetic dosing consults. Resident will actively participate in interdisciplinary team meetings and neurosurgical rounds. The medical team consists of UCLA Neurosurgery attendings, UCLA Neurosurgery residents and Surgery interns, nurse practitioners and a clinical pharmacist.



- **Advanced Acute Care Neurology:** Residents will build upon their experience from Acute Care Neurology and provide patient care with an emphasis on increased independence while assessing medication appropriateness and devising medication plans. They may have the opportunity to precept pharmacy students and PGY1 pharmacy residents under the supervision of their pharmacy preceptors.

Ambulatory Care Experiences

- **Ambulatory Care Neurology:** During this learning experience, residents will be participating in various clinics listed below. They will have the opportunity to assess current neurology disease specific medication regimen to initiate and adjust medications under the supervision of clinical pharmacists and attending physicians. Their responsibilities will also include interviewing patients prior to seeing their provider, reviewing medication profiles for drug interactions, appropriate dosing, therapy duplication, and possible medication-induced side effects, assessing adherence, and identifying barriers to adherence. Residents will be an integral part of a multidisciplinary team to optimize medication therapy regimen.
 - **Secondary Stroke Prevention Clinic** (two half-days per week): This clinic focuses primarily on the prevention of secondary stroke. Residents will also have the opportunity to provide education related to stroke such as medication teaching, recognition of stroke symptoms, and utilization of non-pharmacological treatments.
 - **Refractory Seizure Clinic** (one half-day per week): In addition to the responsibilities listed above, residents will also obtain a comprehensive anti-seizure medication history and monitor seizure response.
 - **Headache Clinic** (one half-day per week): In addition to the responsibilities listed above, residents will be involved in selection of abortive medications and evaluate usage to prevent medication overuse headaches. They will evaluate the need for prophylactic treatment and participate in initiating and monitoring appropriate prophylactic therapy. They will also educate patients to recognize signs and symptoms of headache and to identify headache triggers.
 - **Movement Disorder Clinic** (one half-day per week): In this clinic, residents will have the opportunity to provide care for patients with movement disorders such as idiopathic Parkinson's disease (PD), essential tremor, Huntington's disease, tardive dyskinesia, etc. Residents will also assess and evaluate treatments related to non-motor symptoms of PD such as psychosis, depression, dementia, autonomic dysfunction, and insomnia.
- **Advanced Ambulatory Care Neurology:** In addition to the clinics and responsibilities listed in the Ambulatory Care Neurology learning experience, residents will have the option of adding one of the following clinics:
 - **General Neurology Clinic** (one half-day per week): In addition to above responsibilities, residents will have the opportunity to provide detailed counseling on medications to patients diagnosed with general neurologic disorders, particularly neuropathy and myasthenia gravis.
 - **Neurobehavior Clinic** (one half-day per week): Residents will have the opportunity to conduct an in-depth review of medication profiles, evaluating all medications and their potential to contribute to memory disorders. Residents will also be involved in telephone titration of dementia medications.
 - **Multiple Sclerosis Clinic** (one half-day per week): In this clinic, residents will evaluate medication therapy regimen as related to multiple sclerosis (MS) and MS flare. They will be assisting in selection of disease modifying agents with considerations of efficacy, safety, and formulary status.

Program Structure

ROTATIONS

Learning Experience	Location	Duration [Expected Time]	Expected Time
Required Experiences			
Orientation	VA GLA	~2 weeks	N/A
Acute Care Neurology	VA GLA	12 weeks	5 days a week
Advanced Acute Care Neurology	VA GLA	12 weeks	5 days a week
Ambulatory Care Neurology	VA GLA	12 weeks	5 days a week
Advanced Ambulatory Care Neurology	VA GLA	12 weeks	5 days a week
Education/Preceptoring	VA GLA	Longitudinal, 12 months	N/A
QI/Research Project	VA GLA	Longitudinal, 12 months	N/A
Elective Experiences			
Acute Care Psychiatric Pharmacy Practice	USC +LAC	6 weeks	5 days a week
USC Teaching Certificate Program	USC School of Pharmacy	Longitudinal, 10 months	1 half-day per week

Staffing Requirements

Residents are required to function as a pharmacist in the inpatient setting for average 1 day every weekend for 1 rotation of the year. Inpatient staffing covers ICU, ward, and ED patients, in addition to patients on PK and heparin per pharmacy medications.





PGY2 Ambulatory Care Pharmacy Residency

General Information

This specialty residency offers a comprehensive experience in ambulatory care with an opportunity in providing care to the underserved. VAGLA's HPACT program is a nationally designated Homeless PACT, focused on delivering "whole health care." Established in July 2014, HPACT's four interprofessional teams are among the country's most highly concentrated groups of integrated mental health and primary care teams.

VAGLA has established an Interprofessional Academic PACT within our HPACT program (iA-HPACT). The iA-HPACT was created as a learning lab to promote the transformation of VA into interprofessional learning experiences to prepare trainees to practice, lead, and thrive in team-based health-systems.

The resident will participate in HPACT and PACT activities as integral members of the interprofessional team approximately seven half-days per week. An equivalent of approximately one day per week will be devoted to experiences in select subspecialty clinics, in blocks of six weeks, depending upon the rotation

and the interest of the resident. Practice experiences primarily take place at the West Los Angeles (WLA) Medical Center location.

Ambulatory care preceptors may include skilled physician providers, ambulatory care pharmacists, providers from other disciplines, and research faculty members experienced in their respective specialty, as well as in research and academia.

Residents will be involved in teaching, with possible appointment as Adjunct Clinical Instructor of Pharmacy Practice at the USC School of Pharmacy. Teaching opportunities include didactic and small group facilitations, as well as precepting pharmacy students and PGY1 pharmacy practice residents.

Research project is required for successful completion of this program. Residents are required to complete an ambulatory care related research project suitable for presentation and publication.



Practice Experience

HPACT/PACT Experiences

- **Up to Four Days per Week:** The resident will be involved with providing clinical pharmacy services to HPACT patients on the iA-HPACT team with trainees from other disciplines (Primary Care Internal Medicine, Psychiatry, Nurse Practitioner, and Psychology) and/or PACT. The resident will also work with other healthcare staff, such as RN Care Managers, licensed vocational nurses (LVN), and social workers. The resident will participate in morning team huddles, patient-team huddles for complex patients, team meetings, continuous quality improvement and workflow meetings, and learning seminars. Program learning goals emphasize complex care of homeless Veterans and interprofessional (IP) team collaboration. The curriculum will address IP competencies in five domains: complex care of homeless

Veterans, IP collaboration; sustained relationships; shared decision making; performance improvement. This component of the residency is longitudinal.

- The resident will be involved with providing clinical pharmacy services to HPACT and PACT patients. Responsibilities include complex medication management of patients referred to pharmacy for chronic diseases such as diabetes, hypertension, and dyslipidemia as well as prescription processing, medication counseling, provision of drug information, patient/provider education. Residents may also be involved in shared medical appointments (SMA), as well as in innovation and implementation of new services. This component of the residency is longitudinal.

Specialty Experiences

- **Up to One-Two Days per Week:** The resident will practice in various subspecialty clinics, in blocks of six weeks or twelve weeks throughout the year. This may include experiences in specialties such as, women's health, transgender care, gastroenterology/hepatology, MOVE! Weight management clinic, geriatrics and Women's Health, neurology, Infectious Disease

(HIVPrEP), pain management, and cardiology. Depending upon the practice of pharmacy within each of the specialized clinics, responsibilities may include activities such as complex medication management of patients referred to pharmacy, clinical video telehealth (CVT), VA Video Connect (VVC), electronic consults (e-consults), shared medical appointments (SMA), and patient education.



Program Structure

ROTATIONS

PGY2 Ambulatory Care Pharmacy Residents must successfully complete all required longitudinal and block rotations.

Learning Experience	Location	Duration [Expected Time]	Expected Time	Therapeutic Areas of Clinical Focus (From Appendix)
Required Experiences				
Orientation	VA GLA	~2 weeks		n/a
HPACT/PACT	VA GLA	Longitudinal, 12 months	Up to 3-4 days per week	Cardiology, Endocrine, Gastroenterology, Psychiatry, Pulmonology, Geriatrics, Men's Health, Infectious Disease
Ia-hpact	VA GLA	Longitudinal, 12 months	one-half to one day per week	n/a
Move! Weight Management	VA GLA	Longitudinal, 6 months	one-half day per week	Endocrinology, Gastroenterology, Cardiology
Cardiology	VA GLA	6 weeks	1.5 days per week	Cardiology, Endocrinology
Neurology	VA GLA	6 weeks	one-half day per week	Neurology
Gastroenterology/Hepatology	VA GLA	12 weeks	1 day per week	Gastroenterology, Infectious Disease, Endocrinology, Psychiatry
Outpatient Staffing	VA GLA	Longitudinal (18 weeks total, 6 weeks (1 block) at a time)	one-half day per week	n/a
Education/Preceptoring	VA GLA	Longitudinal, 12 months	1/2 day per week during admin time	n/a
QI/Research Project	VA GLA	Longitudinal, 12 months	1/2 day per week during admin time	n/a



Elective Experiences (up to 3)				
Pain Management	VA GLA	6 weeks	1 day per week	Neurology
Transgender Care	VA GLA	6 weeks	1 day per week	Women's Health, Endocrinology
Women's Health	VA GLA	6 weeks	1 day per week	Women's Health, Endocrinology, Cardiology
Geriatrics/Women's Health - Sepulveda	VA GLA	6 weeks	1 day per week	Women's Health, Endocrinology, Cardiology
Infectious Disease (HIVPrep)	VA GLA	6 weeks	one-half to one day per week	Infectious Disease
USC Teaching Certificate Program	USC School of Pharmacy	Longitudinal, 10 months	one-half day per week	n/a

**Each resident may select up to 3 electives. If an elective is desired in another specialty area, consideration will be given to the development of such if clinic space, preceptor availability, and support of the medical providers in such clinic allows. A separate learning experience will be developed for the learning experience with the assistance of the resident. If the elective is to be in the same area of a required learning experience, the learning experience will be conducted at a more advanced level under a different learning experience description (that the resident will be expected to assist in developing) and with different objectives and additional activities than the required learning experience that the resident completed.*

As required by ASHP, residents must have direct patient care experiences in at least 8 of the 15 areas identified in the appendix of *Required Competency Areas, Goals, and Objective for Postgraduate Year Two (PGY2) Ambulatory Care Pharmacy Residencies* (<https://www.ashp.org/-/media/assets/professional-development/residencies/docs/pgy2-ambulatory-care-residency-competency-areas-goals-objectives.ashx>), two of which may be covered by case-based application through didactic discussion, reading assignments, case presentations, and/or written assignments.

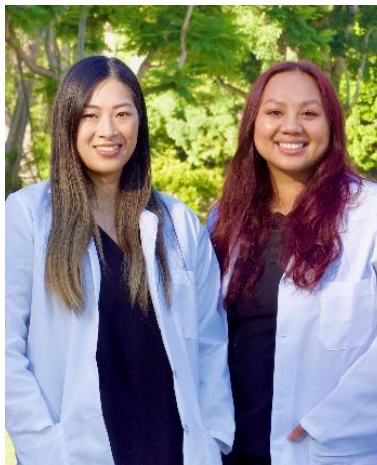


PROJECT/PRESENTATION/PARTICIPATION RESPONSIBILITIES

1. Prepare or revise a protocol (e.g., workflow, scope of practice, collaborative practice agreement, or clinical practice protocols) related to ambulatory care (R2.1.1)
2. Contribute to the development of a new ambulatory care pharmacy service or to the enhancement of an existing service (R2.1.2)
3. At least 2 presentations to an interprofessional audience (R4.1.1, R4.1.2, R4.1.3, R4.1.4)
4. At least 2 presentations to a pharmacy audience (R4.1.1, R4.1.2, R4.1.3, R4.1.4)
5. Minimum of 2 journal clubs (R4.1.1, R4.1.2, R4.1.3, R4.1.4)
6. QI/Research Project Requirements (R2.2)
7. Participate or design and/or deliver programs for patients that focus on health improvement, wellness, and disease prevention (e.g., immunizations, health screenings). (R1.2.1)

STAFFING REQUIREMENTS

Staffing is incorporated longitudinally and does not require completion on additional days.





PGY2 Programs – Longitudinal Experiences

VAGLAHS PGY2 Pharmacy Residents are required to successfully complete **2 longitudinal experiences** (12-months long) located at the Primary Practice Site. Residents also have the option to take elective longitudinal experiences located at USC.

REQUIRED

1. QI/Research Project

VAGLAHS utilizes the Flipped or Inverted Research Model (IRM) for residency projects. Residents work on 2 projects throughout the year: 1) Project #1 – Complete a pre-existing project started by a previous resident; 2) Project #2 (Flipped Model) – Initiate a new project to be completed by a following resident. Minimum resident requirements for Project #1: Abstract, PowerPoint, Manuscript, Poster, presented at regional conference, electronic Research Binder (for IRB projects only), and physical Research Binder (for IRB projects that require it only). Minimum resident requirements for Project #2: Project Description or Protocol, Abstract, IRB paperwork and submitted application (if applicable), Hand-Off Summary, and electronic Research Binder (for IRB projects only).

2. Education/Precepting

Residents will have the opportunity to precept PGY1 residents, APPE pharmacy students (Level IV), IPPE pharmacy students (Level I/II/III), and possibly pharmacy interns and pre-pharmacy students.

PGY2 Ambulatory Care residents will offer availability as primary preceptor for at least 2 IPPE students. When assigned as primary preceptor of IPPE student, resident is responsible to conduct and organize the student rotation and complete student evaluations in a timely manner.

PGY2 Neurology residents have the option to be primary preceptor for IPPE students. If opting in on this experience, resident would offer availability as primary preceptor for at least 2 IPPE students. When assigned as primary preceptor of IPPE student, resident is responsible to conduct and organize the student rotation and complete student evaluations in a timely manner.

ELECTIVE

• USC Teaching Certificate Program

Residents have the option of a joint academic appointment with the USC School of Pharmacy which offers opportunities to teach and lecture to Level I, II and III Pharm.D. students, and undergraduate pre-pharmacy students. Residents are provided the opportunity to participate in various scheduled coursework and seminars developed to enhance the residency experience. Those residents participating in this affiliation will receive faculty appointment and earn a teaching certificate from the university. This is a 10-month long longitudinal experience.



General Residency Information

Program Components	Description
General Program Description	<ul style="list-style-type: none"> • Type/Duration of Program: Full-time residency/12 months • Number of Positions: <ul style="list-style-type: none"> ○ Neurology: 2 ○ Ambulatory Care: 2 • Residency Start Date: July 1 • Term of Appointment: 52 weeks starting July 1, through June 30 the following year • Estimated Stipend: \$58,273 • Benefits: <ul style="list-style-type: none"> ○ Medical, vision, and dental insurance ○ 11 paid holidays ○ 13 days Sick Leave and 13 days Vacation/Annual Leave ○ Free parking on-site ○ Lab coats and lab coat laundry service ○ Official travel to attend meetings and educational conferences ○ Partial financial support for registration fees and travel expenses to attend selected meetings
Applicant Qualifications	<ul style="list-style-type: none"> • Doctor of Pharmacy degree from an ACPE accredited school of pharmacy • Completing or have completed an ASHP-accredited or candidate-status PGY1 residency • US citizenship for Federal employment (<i>must be a US citizen at the time of application</i>) • Must meet eligibility requirements set forth by the Office of Academic Affiliations –https://www.va.gov/files/2022-04/2021HPTInstructionsv4.pdf • License may be from any of the 50 states <i>Licensing exam must be taken prior to July 1 of the residency year with licensure prior to or within 120 days after the residency start date.</i>
Affiliation with USC Alfred E. Mann School of Pharmacy and Pharmaceutical Sciences	<ul style="list-style-type: none"> • Optional joint appointment to the residency program • Includes USC faculty appointment and teaching certificate • Responsibilities include teaching/facilitating discussions for Level I, II and III pharmacy students, as well as lecturing pharmacy students and/or pre-pharmacy students • Opportunity to participate in coursework and seminars developed by the university for pharmacy residents •



Application Process

Components	Description
Required Application	<p>Register with the ASHP Resident Matching Program</p> <ul style="list-style-type: none"> • www.natmatch.com/ashprmp <p>Application via PhORCAS™</p> <ul style="list-style-type: none"> • Basic demographics • Curriculum Vitae (CV) • Three References (via PhORCAS online recommendation form only) • Official Pharmacy School Transcript • Extracurricular information • Letter of Intent <p><i>(note, Supplemental Application no longer required)</i></p>
Application Deadline	<ul style="list-style-type: none"> • Application Deadline (PhORCAS™): January 2, 11:59PM EST • Applications must be completed and submitted via PhORCAS™ and meet established deadlines to be considered
Required Interview	<ul style="list-style-type: none"> • Interviews are offered to eligible candidates upon initial review of application materials • Interview required for final consideration

Applications must be complete and meet yearly established deadlines to be considered. Only applications and materials submitted via PhORCAS™ will be accepted. Incomplete or late applications will not be considered.

VAGLAHS Pharmacy Residency Programs participate in the ASHP Residency Matching Program and follow ASHP Match Rules. This residency agrees that no person at this residency will solicit, accept, or use any ranking-related information from any residency applicant. Download the Application Agreement from www.natmatch.com/ashprmp.

Download Program Information

The most updated versions of the VAGLAHS Pharmacy Residency PGY1 and PGY2 Program Booklets, and Residency Showcases and Open House Information are available for download at the following link:

- <https://tinyurl.com/VAGLA-PharmacyResidency>



Current Residency Class of 2023-2024: PGY1 Pharmacy Residents



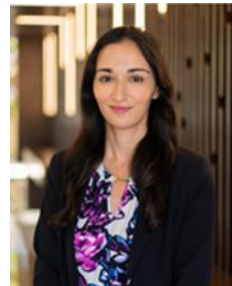
Joy Ahn, Pharm.D.
University of Southern California,
Alfred E. Mann School of Pharmacy
Area of Focus: Acute Care
Clinical Interests: ICU, Cardiology
Joy.Ahn1@va.gov



Keysi Ekmekciyan, Pharm.D.
Western University of Health
Sciences, School of Pharmacy
Area of Focus: General
Clinical Interests: AmCare, ID,
Managed Care
Keysi.Ekmekciyan@va.gov



Jasmine Hedvat, Pharm.D.
Chief Resident
University of Southern California,
Alfred E. Mann School of Pharmacy
Area of Focus: Acute Care
Clinical Interests: ICU, Cardiology
Jasmine.Hedvat@va.gov



Gayane Kechechyan, Pharm.D.
University of California, San Diego,
Skaggs School of Pharmacy
Area of Focus: Neurology
Clinical Interests: Neurology, AmCare
Gayane.Kechechyan@va.gov



Klara Kim, Pharm.D.
University of the Pacific,
Thomas J. Long School of Pharmacy
Area of Focus: General
Clinical Interests: Oncology
Klara.Kim@va.gov



Shogo Kono, Pharm.D.
Chief Resident
Western University of Health
Sciences, School of Pharmacy
Area of Focus: Acute Care
Clinical Interests: ICU, Cardiology, ID
Shogo.Kono@va.gov



Danielle Kruse, Pharm.D.
University of Southern California,
Alfred E. Mann School of Pharmacy
Area of Focus: Acute Care
Clinical Interests: ID
Danielle.Kruse@va.gov



Zorik Tagmizyan, Pharm.D.
University of Southern California,
Alfred E. Mann School of Pharmacy
Area of Focus: General
Clinical Interests: Diabetes,
Anticoagulation
Zorik.Tagmizyan@va.gov



U.S. Department
of Veterans Affairs
VA Greater Los Angeles Healthcare System

PGY2, NEUROLOGY
VA GREATER LOS ANGELES, ASHP Match Number 703883
PGY2, AMBULATORY CARE
VA GREATER LOS ANGELES, ASHP Match Number 728665

PGY2 Ambulatory Care Pharmacy Residents



Cleopatra Siagian, Pharm.D.

Loma Linda University, School of
Pharmacy

Completed PGY1 Pharmacy Practice
Residency 2022-2023 at County of
Santa Clara Health System, San Jose, CA
Cleopatra.Siagian@va.gov



Dalena Tran, Pharm.D.

Chapman University, School of
Pharmacy

Completed PGY1 Managed Care,
Ambulatory Care & Community Care
Pharmacy Residency 2022-2023 at
University of Toledo Medical Center,
Toledo, OH
Dalena.Tran@va.gov

PGY2 Neurology Pharmacy Residents



Caroline Grabowski, Pharm.D.

Rutgers University, Ernest Mario
School of Pharmacy

Completed PGY1 Pharmacy Practice
Residency 2022-2023 at Meritus
Medical Center, Hagerstown, MD
Caroline.Grabowski@va.gov



Aisha Vaiyani, Pharm.D.

University of Southern California,
Alfred E. Mann School of Pharmacy

Completed PGY1 Pharmacy Practice
Residency 2022-2023 at VA Greater
Los Angeles Healthcare System
Aisha.Vaiyani@va.gov



U.S. Department
of Veterans Affairs
VA Greater Los Angeles Healthcare System

PGY2, NEUROLOGY
VA GREATER LOS ANGELES, ASHP Match Number 703883
PGY2, AMBULATORY CARE
VA GREATER LOS ANGELES, ASHP Match Number 728665

First Positions Accepted Post-Residency (Previous 6 years)

Program	Position
Neurology	<ul style="list-style-type: none"> • California Rehab Center – Neurology Clinical Pharmacy Specialist • Cedars Sinai Medical Center – Neurology Clinical Pharmacy Specialist • Massachusetts General Hospital – Neurology Clinical Pharmacist • Ochsner Medical Center (New Orleans) – Neurology Clinical Pharmacy Specialist • USC Keck Medical Center – Clinical Pharmacist • VA Greater Los Angeles Healthcare System – Neurology Clinical Pharmacy Specialist • VA Greater Los Angeles Healthcare System – Clinical Pharmacist, Inpatient • VA Orlando Healthcare System – Neurology Clinical Pharmacy Specialist
Ambulatory Care	<ul style="list-style-type: none"> • Fellowship in Academia – USC School of Pharmacy • LA County Department of Mental Health – Mental Health Clinical Pharmacy Specialist • Lakeside Medical Group – Ambulatory Care Clinical Pharmacist • Neighborhood Healthcare – Clinical Pharmacist Specialist • Pomona Valley Hospital Medical Center/FHC – Ambulatory Care Clinical Pharmacist • San Francisco General Hospital – Ambulatory Care Pharmacist • UC San Diego Health – Ambulatory Care Pharmacist • VA Greater Los Angeles Healthcare System – Clinical Pharmacist, Outpatient • VA Sierra Nevada Healthcare System – Ambulatory Care Clinical Pharmacy Specialist



PGY2, NEUROLOGY
VA GREATER LOS ANGELES, ASHP Match Number 703883
PGY2, AMBULATORY CARE
VA GREATER LOS ANGELES, ASHP Match Number 728665

Contact Us:

VA Greater Los Angeles Healthcare System

Pharmacy Service
11301 Wilshire Boulevard (691/119)
Building 500, Room 6042
Los Angeles, CA 90073
Pharmacy Education: VHAWLAPharmEdu@va.gov
Pharmacy Residents: VAGLAResidency@gmail.com

Frank Bertone, Pharm.D., BCPS, BCCCP

Chief, Pharmacy Services
(310) 268-3561
Frank.Bertone@va.gov

Amy Cangemi, Pharm.D.

Pharmacy Residency & Education Program Manager
PGY1 Pharmacy Residency Program Director
(310) 478-3711 ext. 41975
Amy.Cangemi@va.gov

Jenna Kawamoto, Pharm.D., BCACP

PGY2 Ambulatory Care Pharmacy Residency Program Director
Clinical Pharmacy Specialist, Gastroenterology/Hepatology/MOVE!
(310) 478-3711 ext. 44664
Jenna.Kawamoto2@va.gov

Jin Suh, Pharm.D., BCPS

PGY2 Neurology Pharmacy Residency Program Director
Clinical Pharmacy Specialist, Neurology and Neurosurgery
(310) 478-3711 ext. 40997
Hyojin.Suh@va.gov

Joy Park, Pharm.D., BCPS

Inpatient Clinical Pharmacy Education Program Manager
(310) 478-3711 ext. 40472
Joy.Park@va.gov

Linda Guo, Pharm.D.

Pharmacy Education Program Manager, Students and Clinical Review
Clinical Pharmacy Specialist, Women's Health and Transgender Health
(310) 478-3711 ext. 54220
Linda.Guo@va.gov

VA



U.S. Department
of Veterans Affairs

VA Greater Los Angeles Healthcare System

**Department of Veterans Affairs
VA Greater Los Angeles Healthcare System**

www.losangeles.va.gov

West Los Angeles Healthcare Center

11301 Wilshire Boulevard | Los Angeles, CA 90073 | 310-478-3711

Sepulveda Ambulatory Care Center

16111 Plummer Street | North Hills, CA 91343 | 818-891-7711

Los Angeles Ambulatory Care Center

351 East Temple Street | Los Angeles, CA 90012 | 213-253-2677

<http://www.pbm.va.gov/PBM/education/vapharmacyresidencyprogram.asp>